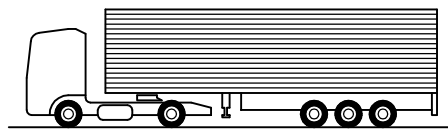
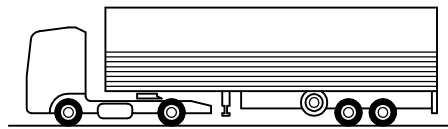
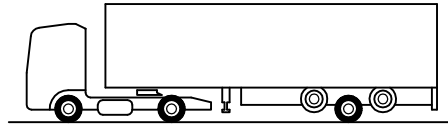


Control of Two Lift Axles

Full Automatic and Sequential



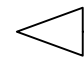
ACCEVAL MCE-2
AUTOMATIC AND SEQUENTIAL CONTROL SYSTEM
FOR TWO LIFT AXLES WITH TWO MCE-2 VALVES

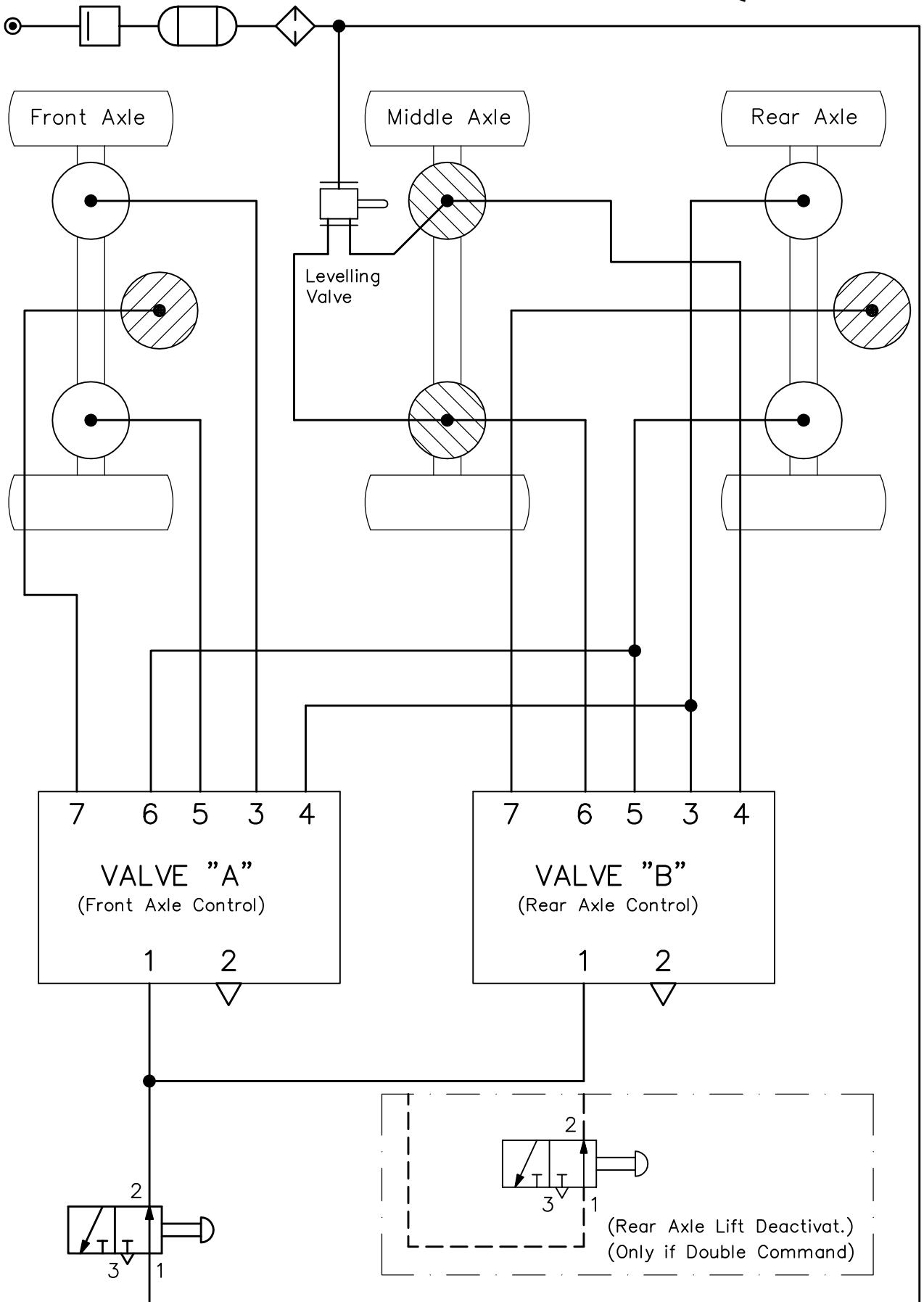
- * To get the correct system working and the programmed sequence, it is necessary to realize some specific connections between both valves, as we can see on the attached schemes.
- * According to drop first the rear axle or the front axle, we can see the reversion of these connections.
- * Adjustment of automatic lifting pressure has to be different for this two valves into the same vehicle:

1) VEHICLE WITH 360 MM BELLOWS:

- + VALVE "A": MCE2-3217
- + VALVE "B":

CONTROL OF TWO LIFT AXLES SCHEME TO DROP FIRST THE REAR AXLE

DRIVING DIRECTION 

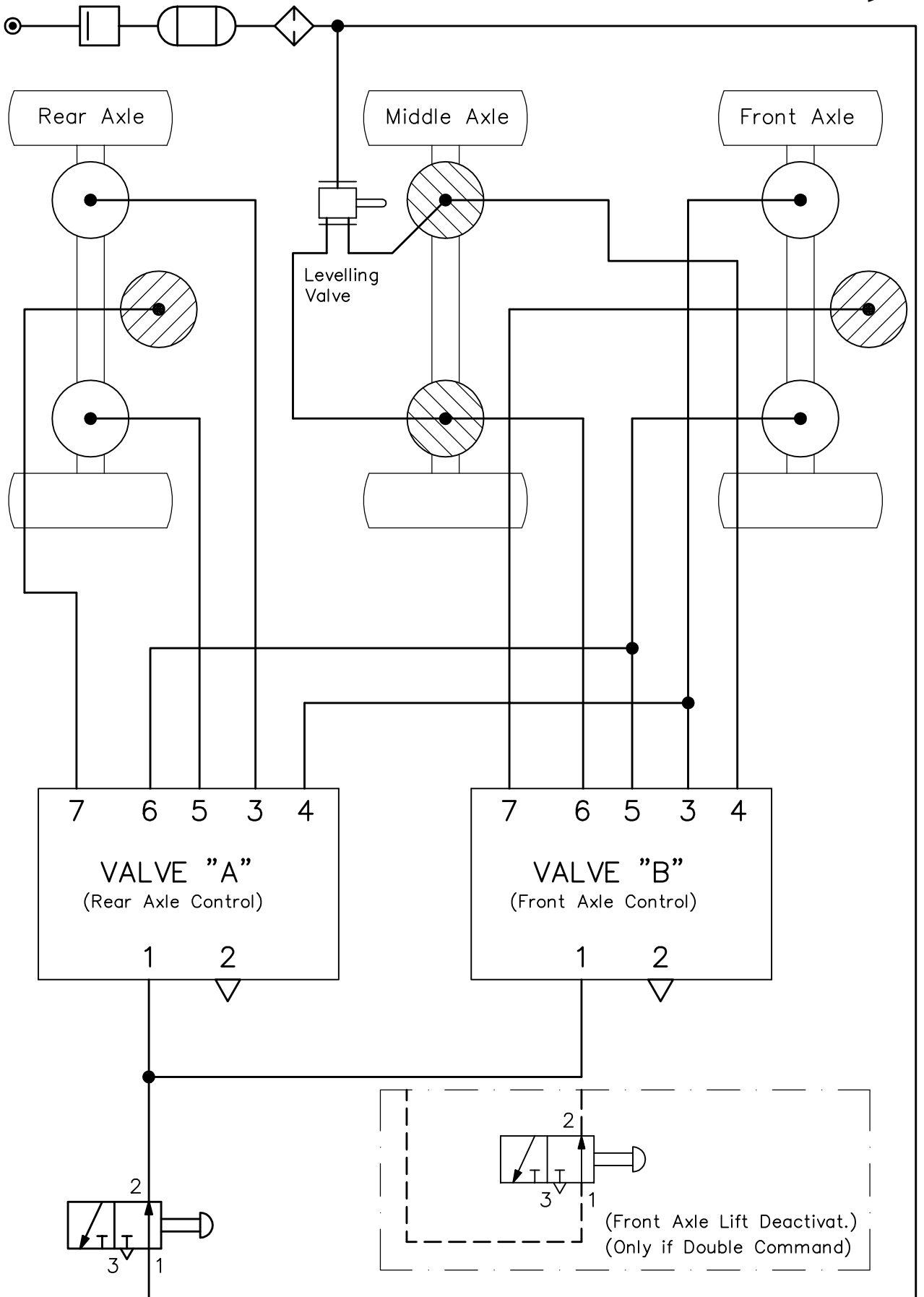


(Both Axle Lift Deactivation)

CONTROL OF TWO LIFT AXLES

SCHEME TO DROP FIRST THE FRONT AXLE

DRIVING DIRECTION 



(Both Axle Lift Deactivation)