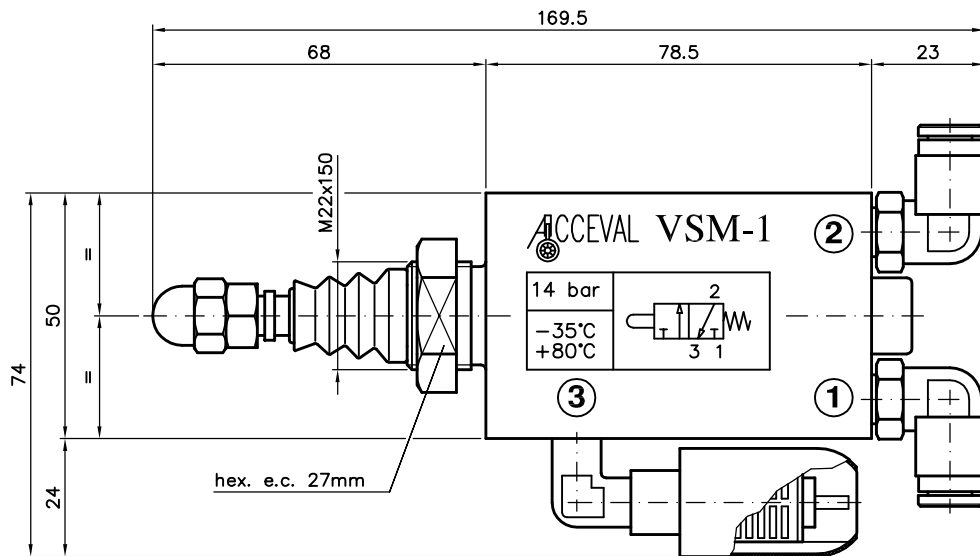


ACCEVAL VSM-1

3/2 MECHANICAL OPERATED VALVE (NORMALLY CLOSED)

APPLICATIONS

- * End Stroke Control for Hydraulic Cylinders in Tipper.
- * Lift Sensor of Tipcart for Quick Exhaust of Suspension Air.

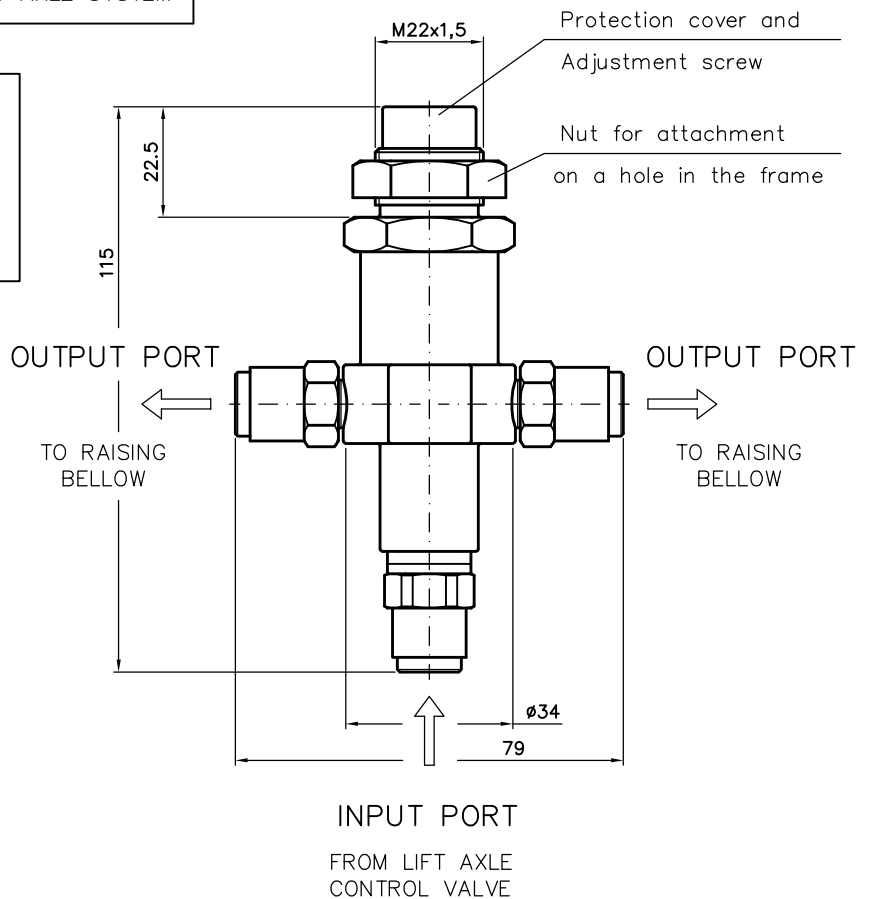


ACCEVAL RPE-2

PRESSURE LIMITING VALVE FOR LIFT AXLE SYSTEM

WORKING SPECIFICATIONS

- * Pneumatical scheme: see drawing.
- * Max. working pressure: 10 bar.
- * Pressure adjustment: from 4 to 7 bar.
- * Equipped with Norgren automotive fittings for 8 mm tube.
(Standard: 2 x Output ports)



PNEUMATIC SCHEME

