

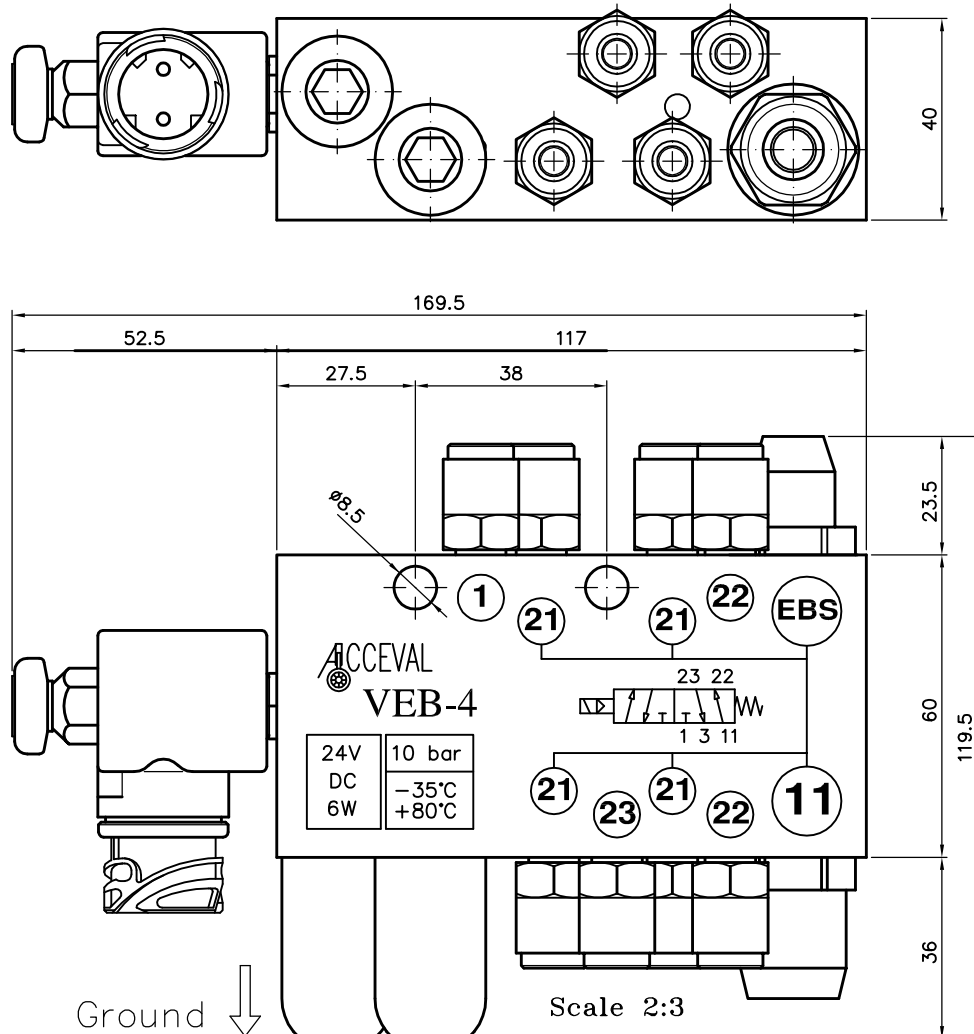
# *Acceval* VEB-4

Lift Axle Control Valve  
Electrically Commanded  
From EBS System



# ACCEVAL VEB-4

AIR DISTRIBUTION BLOCK  
WITH LIFT AXLE CONTROL  
VALVE FOR EBS SYSTEM  
(SUSPENSION: SINGLE CIRCUIT)



## WORKING SPECIFICATIONS

- \* Pneumatical scheme: see drawing.
- \* Max. working pressure: 10 bar.
- \* Safe static pressure: 15 bar.
- \* Temp. range: from  $-35^{\circ}\text{C}$  to  $+80^{\circ}\text{C}$ .
- \* Electrical details: 24V DC 6W.
- \* Electrical Duty: 100%.
- \* Solenoid with bayonet connector DIN72585-A1-2.1 (IP-68).
- \* Electromagnetic compatibility (EMC) according to 89/336/EEC.
- \* Low voltage equipment (LVD) according to 73/23/EEC.
- \* Optional: Solenoid with industrial connector DIN43650 (IP-65).

## PNEUMATICAL CONNECTIONS

Ports n.1, n.21, n.22 and n.23

- \* Automotive push-in fittings T-8mm.

Port n.11

- \* Automotive push-in fittings T-12mm.

Port n.3 (Exhaust) and breathing

- \* Filter + filter cover.

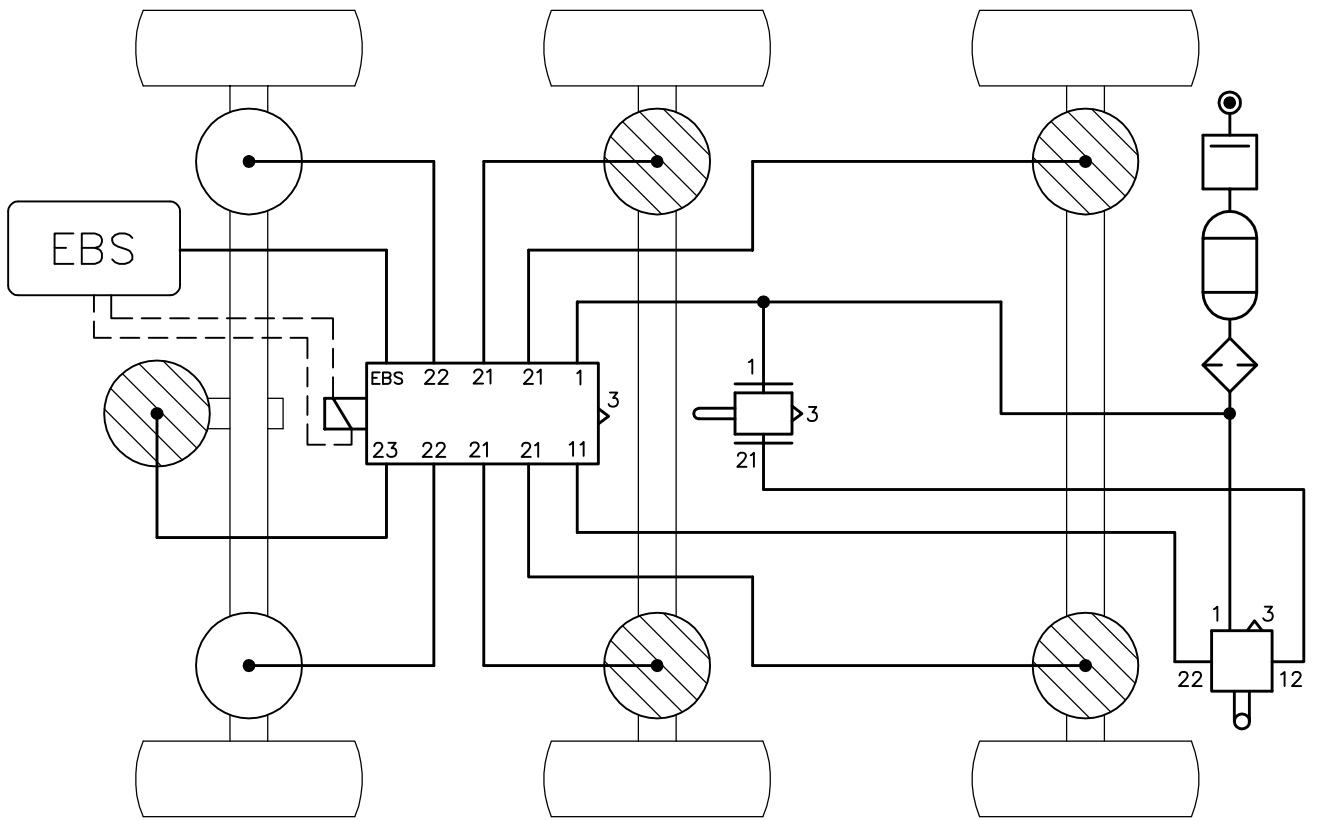
Exhaust port of solenoid valve

- \* Rubber cup protection.

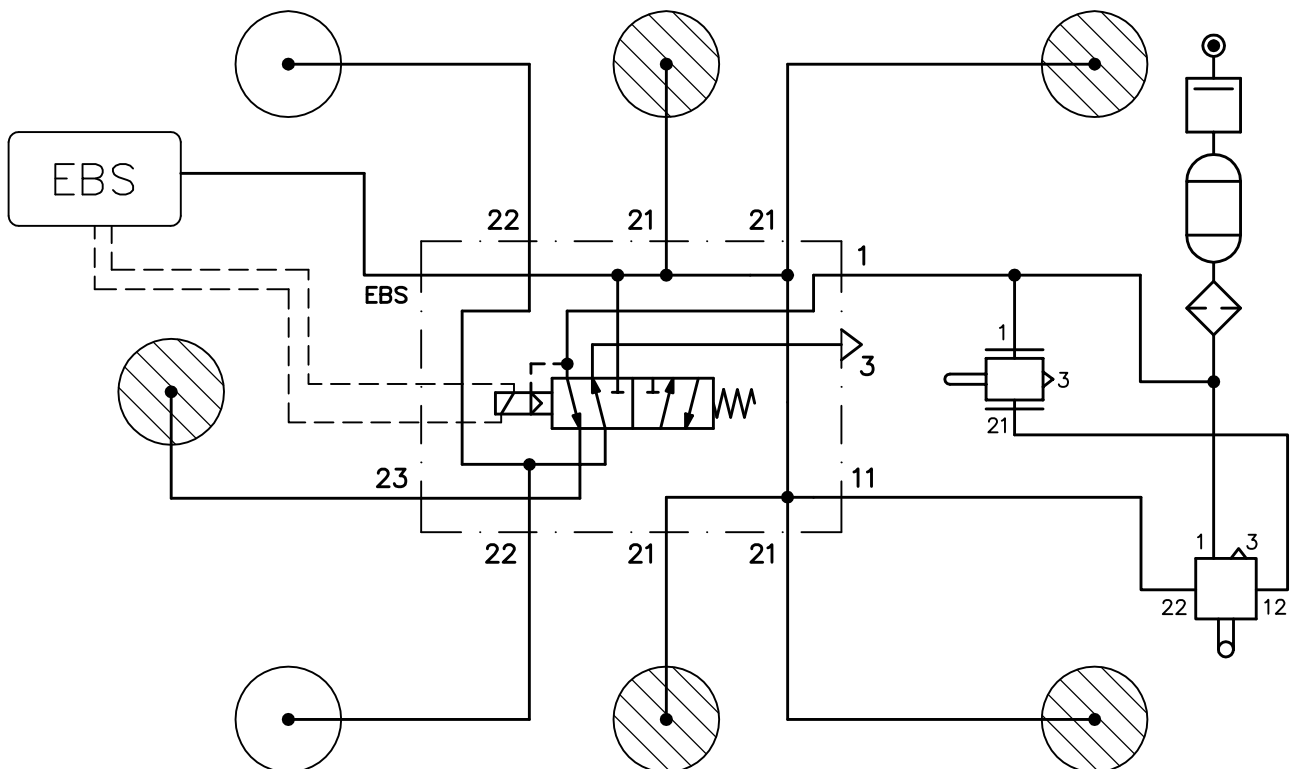
Installation

- \* Port n.1: Air pressure inlet.
- \* Port n.11: From raise/lower valve.
- \* Port n.21: To non-lift axle bellows.
- \* Port n.22: To lift axle bellows.
- \* Port n.23: To lifter.
- \* Port "EBS": To EBS pressure sensor.

**ACCEVAL VEB-4**  
 BASIC CONNECTIONS SCHEME  
 (Suspension: Single Circuit)



**ACCEVAL VEB-4**  
 PNEUMATICAL SCHEME  
 (Suspension: Single Circuit)



# ACCEVAL VEB-4

## OPTIONS AND ANCHORING ORIENTATION

### OPTIONS

1) ~~Electrical connector:~~

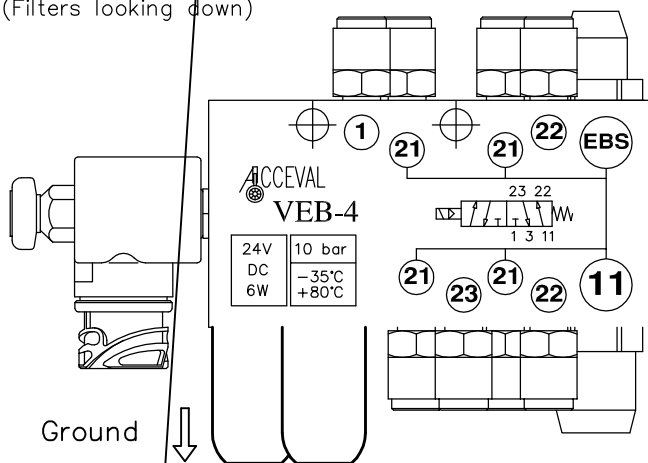
\* Standard:

Solenoid with bayonet connector DIN72585-A1-2.1 (IP-68).

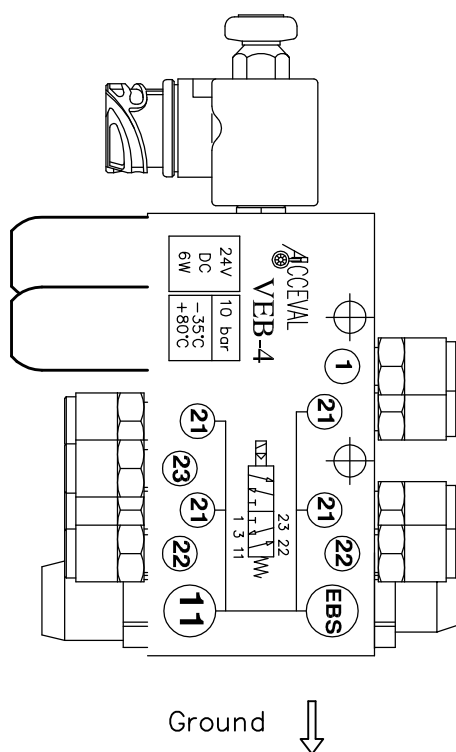
Solenoid with

### THE BEST ORIENTATION

(Filters looking down)



### ACCEPTABLE ORIENTATION



### ACCEPTABLE ORIENTATION

