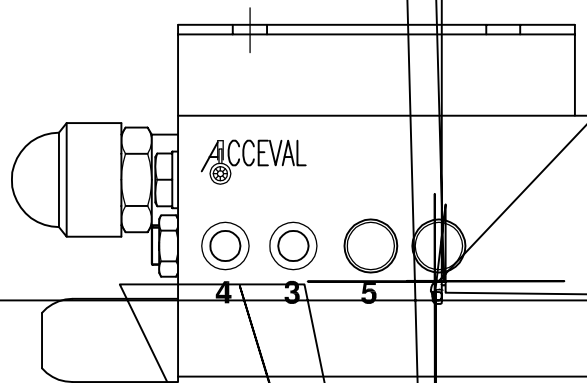


Acceval MCE-3



Lift Axle Control Valve
With Automatic Drop Function

Independent of EBS System

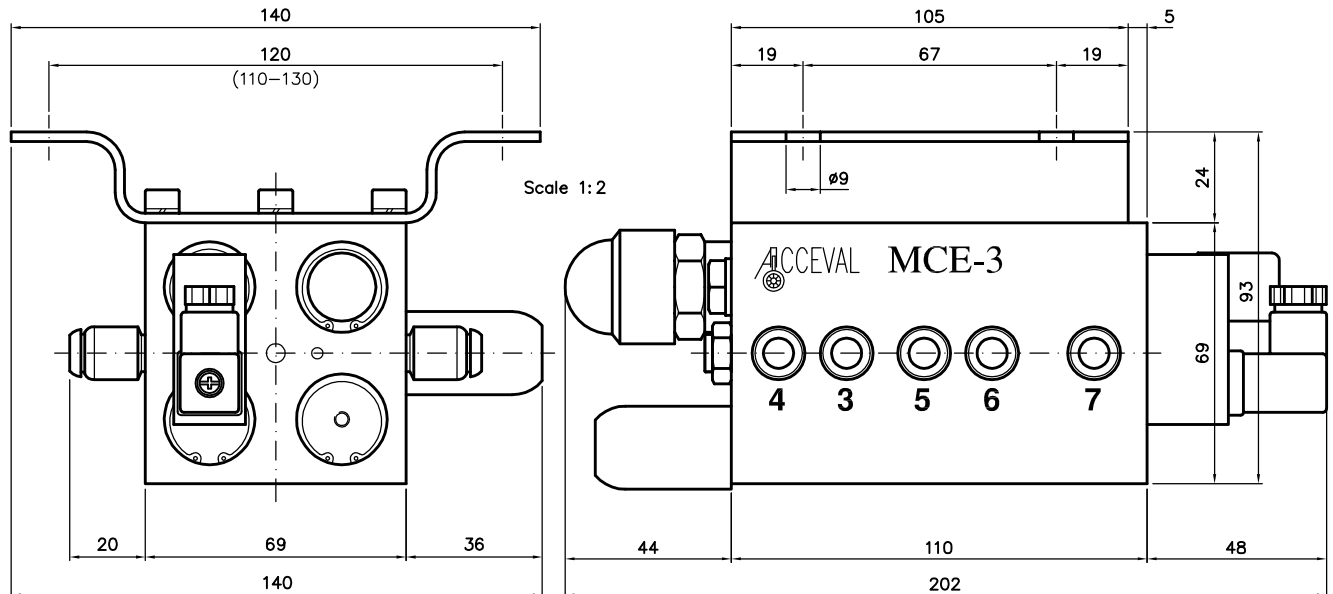
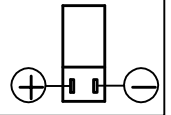
For Suspensions with
Double Circuit

Full Automatic

ACCEVAL MCE-3

FULL AUTOMATIC LIFT AXLE CONTROL VALVE
WITH TRACTION HELP FUNCTION
(Automatic Drop and Lifting)

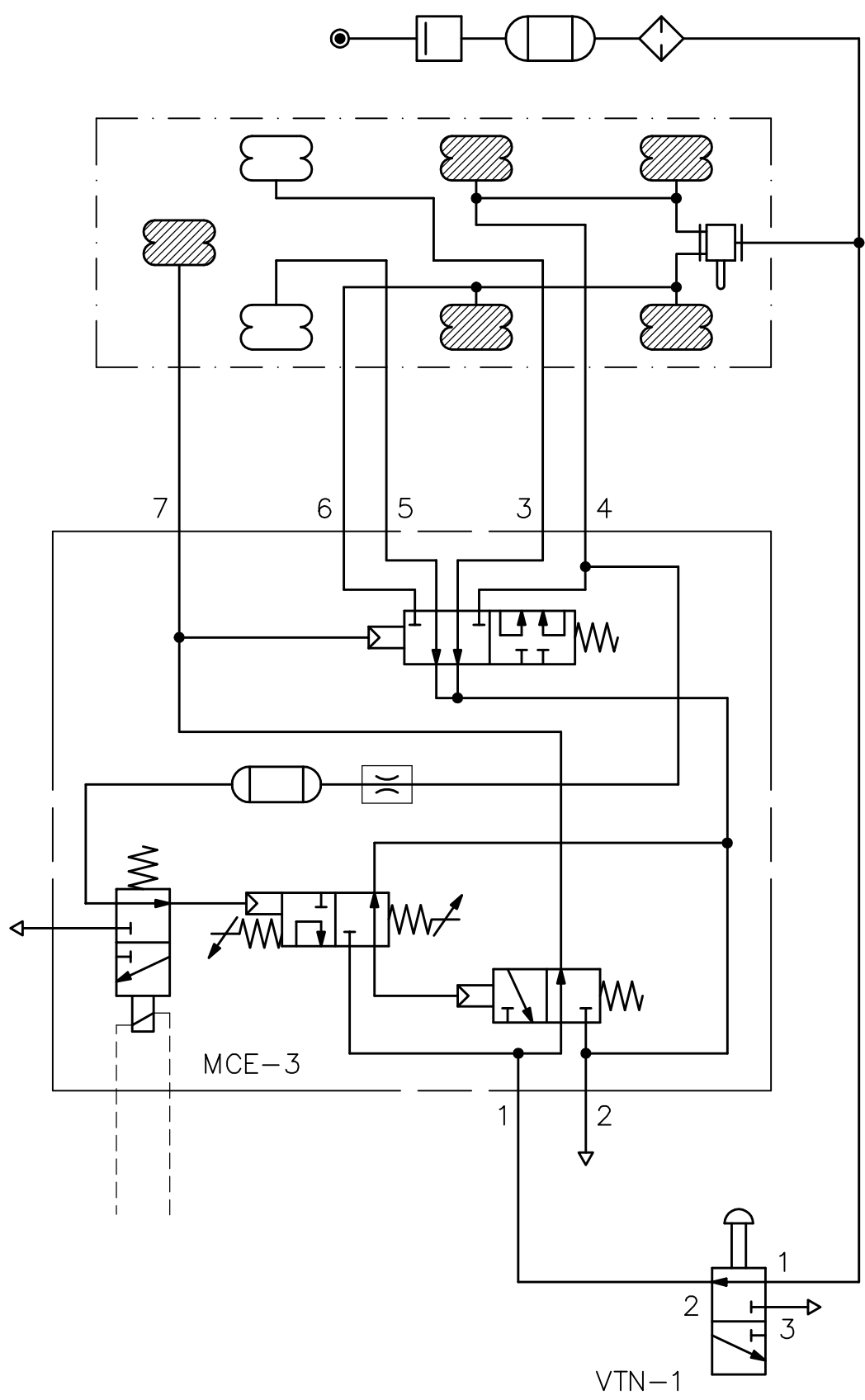
SOLENOID
VALVE
POLARITY



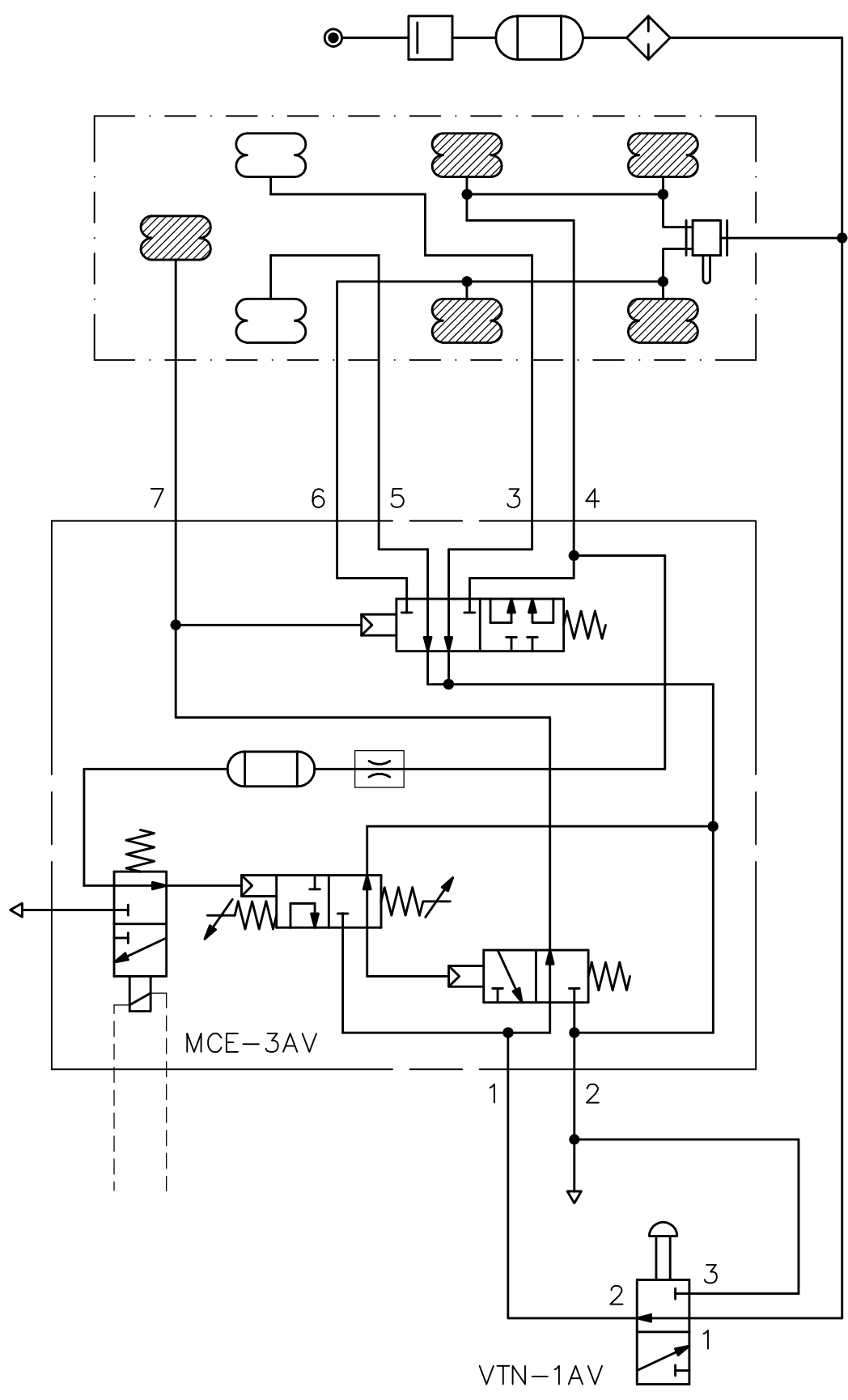
SPECIFICATIONS

- * Full automatic lift axle control valve for double suspension circuit.
- * Automatic Drop and Lifting.
- * Traction Help Function when solenoid (24VDC 2,3W) is activated (Utilization of this function has to be in accordance with laws of corresponding country).
- * Manual Drop by means of an optional 3/2 push-pull valve (Ref.: VTN-1)
- * Fluid to use: Filtered air.
- * Max. working pressure: 14 bar.
- * Temperature range: From -35°C to $+80^{\circ}\text{C}$.
- * Automatic drop pressure range:
 - From 2.5 bar to 5.8 bar.
- * Hysteresis range:
 - From 1.2 bar to 2.6 bar.
 - (Differential between drop and lifting pressures)
- * Standard fittings:
 - Push-in fittings for 8 mm tube.
- * Pneumatic Scheme and Piping: See separate document.
- * Options:
 - Straight fittings for 10 mm tube.
 - Straight fittings for 3/8" tube.
 - Automotive straight fittings for 8 mm tube.
 - Steerable elbow fittings for 8 mm tube.
 - Pressure check tapping.
 - Anti-vacuum connection in main exhaust.
 - 12VDC Solenoid.
 - Timer Kit for temporized control.

ACCEVAL MCE-3
 PNEUMATICAL SCHEME TYPE I
 (STANDARD)



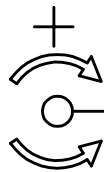
ACCEVAL MCE-3
 PNEUMATICAL SCHEME TYPE II
 (WITH ANTI-VACUUM CONNECTION)



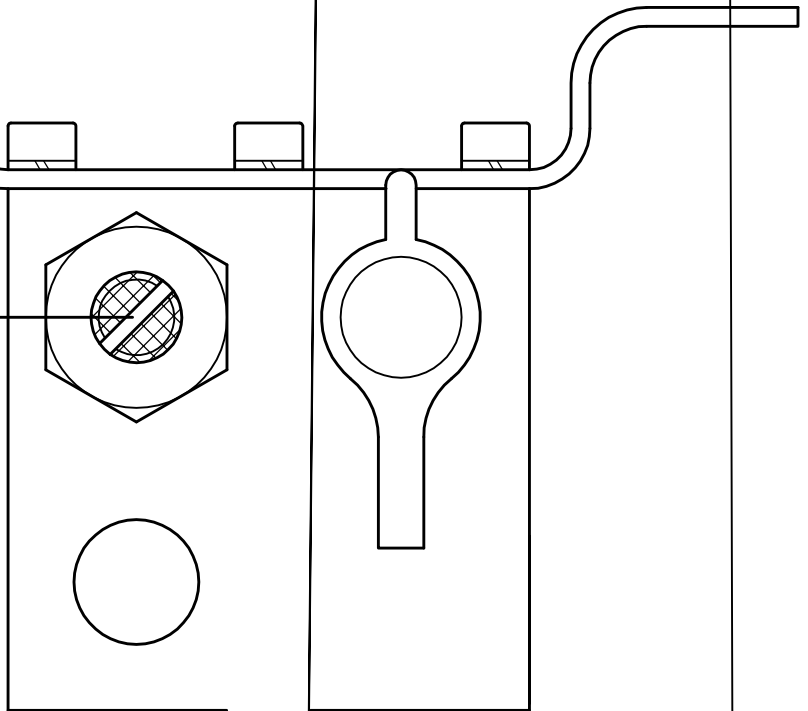
ACCEVAL MCE-3 ADJUSTMENT SCREWS

AUTOMATIC DROP PRESSURE

AUTOMATIC DROP
PRESSURE
ADJUSTMENT SCREW



- * Under Black Cap.
- * Range (approx.):
From 2.5 to 5.8 bar.
- * Ratio (approx.):
0.19 bar each turn.

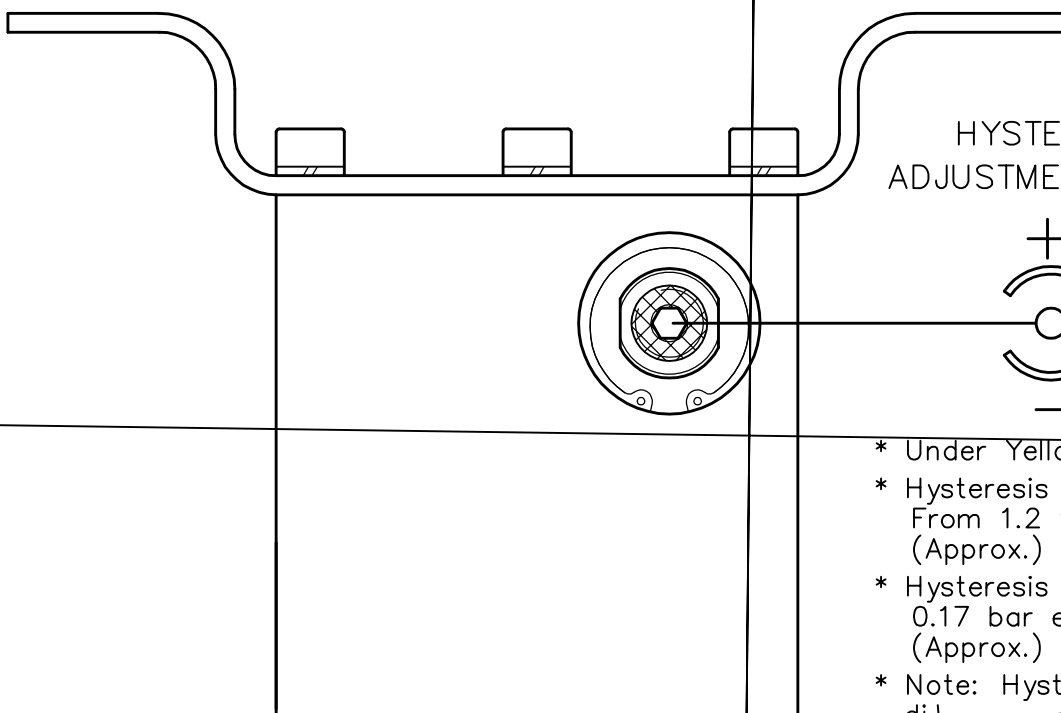


AUTOMATIC LIFTING PRESSURE (HYSTERESIS ADJ.)

HYSTERESIS
ADJUSTMENT SCREW



- * Under Yellow Cap.
- * Hysteresis Range:
From 1.2 to 2.6 bar.
(Approx.)
- * Hysteresis Ratio:
0.17 bar each turn.
(Approx.)
- * Note: Hysteresis is the
diff. between
and lifting pressures.



3 AXLES VEHICLE / 300 MM SUSP. BELLOWS

2 AXLES VEHICLE / 360 MM SUSP. B

2 AXLES VEHICLE / 300 MM SUSP. BELLOWS

- * Automatic Drop Pressure: 4.5 Bar

- * Automatic Lifting Pressure: 1.9 Bar