

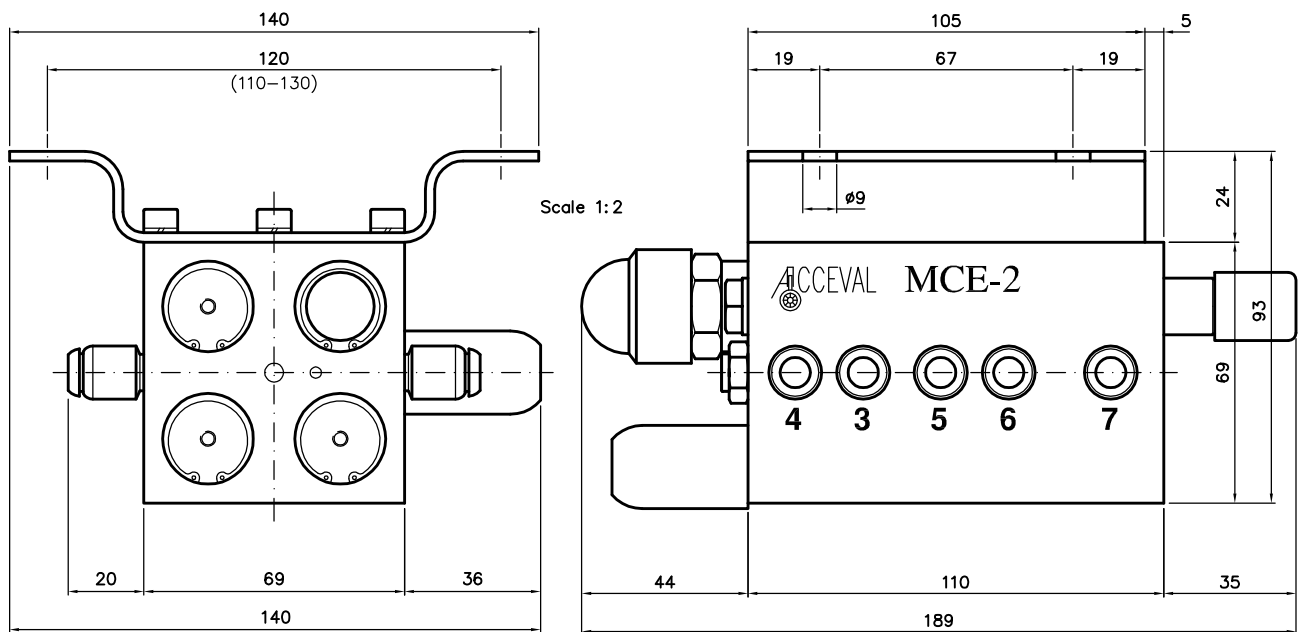
Acceval MCE-2

Left Axle Control Valve
With Automati

ACCEVAL MCE-2

FULL AUTOMATIC LIFT AXLE CONTROL VALVE
(Automatic Drop and Lifting)

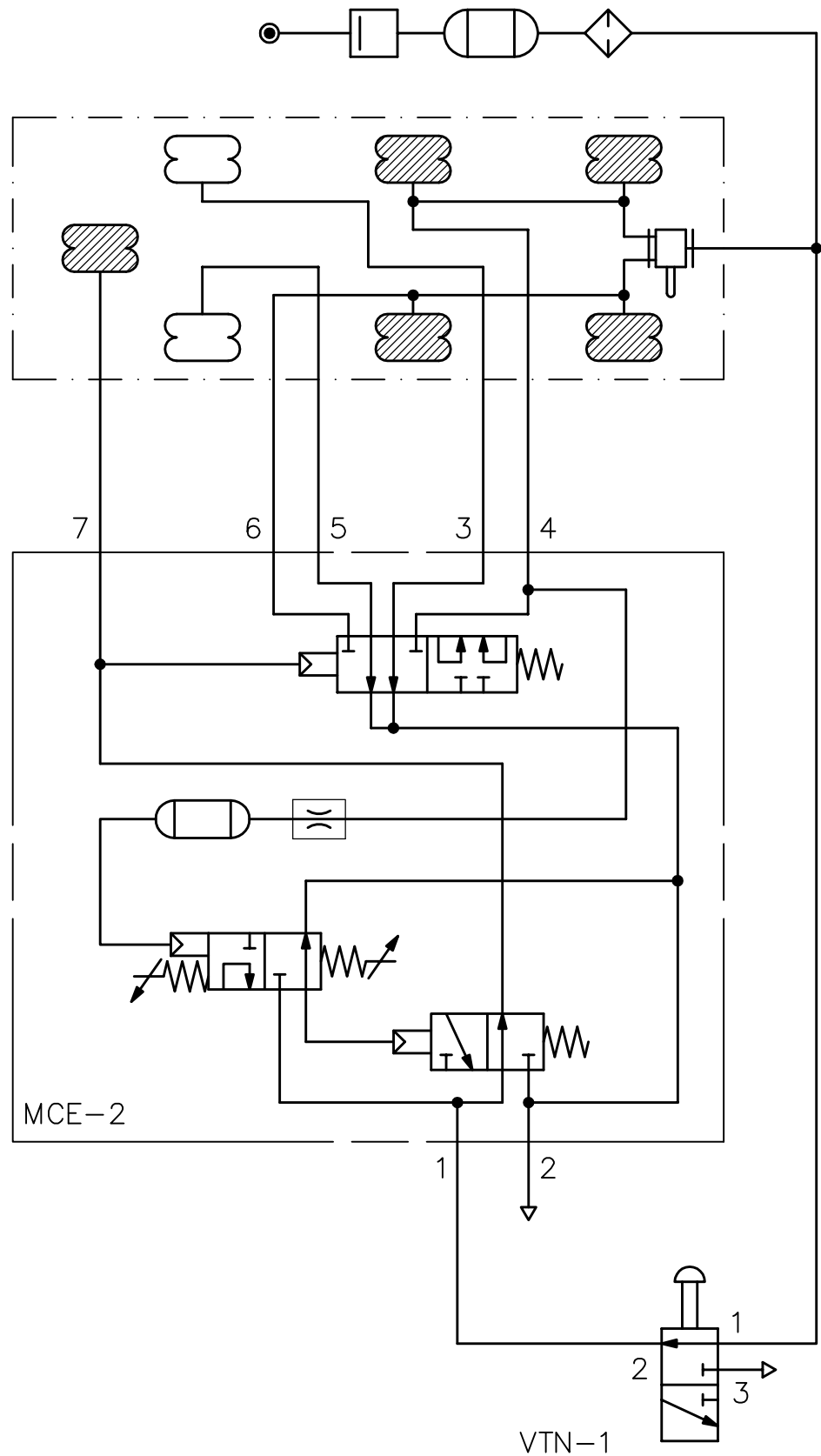
TUV
Nr. 390-0582-96 FBK/B



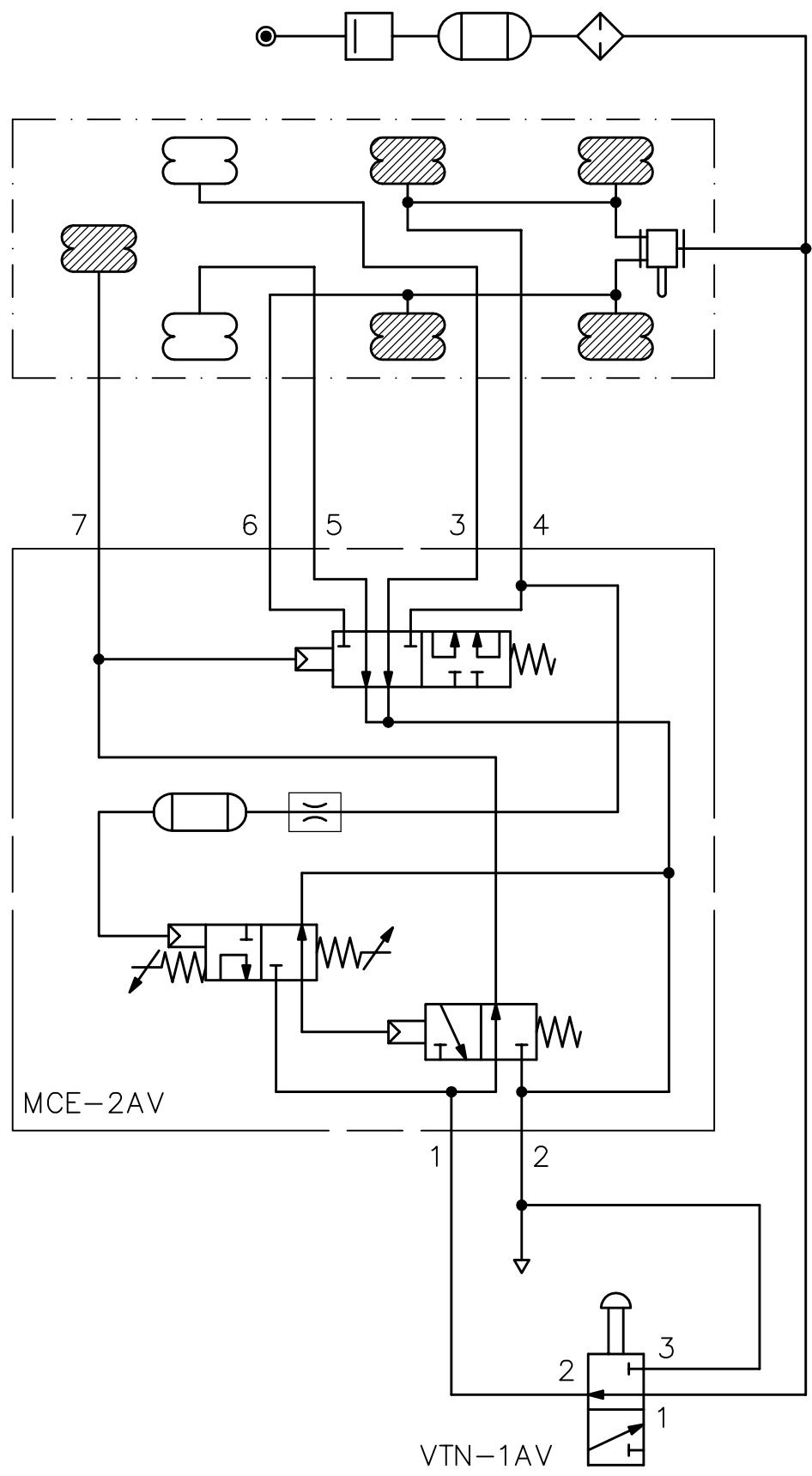
SPECIFICATIONS

- * Full automatic lift axle control valve for double suspension circuit.
- * Automatic Drop and Lifting.
- * Manual Drop by means of an optional 3/2 push-pull valve (Ref.: VTN-1)
- * Fluid to use: Filtered air.
- * Max. working pressure: 14 bar.
- * Temperature range: From -35°C to $+80^{\circ}\text{C}$.
- * Automatic drop pressure range:
 - From 2.5 bar to 5.8 bar.
- * Hysteresis range:
 - From 1.2 bar to 2.6 bar.
 - (Differential between drop and lifting pressures)
- * Standard fittings:
 - Push-in fittings for 8 mm tube.
- * Pneumatic Scheme and Piping: See separate document.
- * Options:
 - Straight fittings for 10 mm tube.
 - Straight fittings for 3/8" tube.
 - Automotive straight fittings for 8 mm tube.
 - Steerable elbow fittings for 8 mm tube.
 - Pressure check tapping.
 - Anti-vacuum connection in main exhaust.

ACCEVAL MCE-2
 PNEUMATICAL SCHEME TYPE I
 (STANDARD)



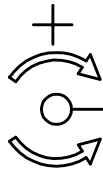
ACCEVAL MCE-2
 PNEUMATICAL SCHEME TYPE II
 (WITH ANTI-VACUUM CONNECTION)



ACCEVAL MCE-2 ADJUSTMENT SCREWS

AUTOMATIC DROP PRESSURE

AUTOMATIC DROP
PRESSURE
ADJUSTMENT SCREW



- * Under Black Cap.
- * Range (approx.):
From 2.5 to 5.5

* N t

AUTOMATIC LIFTING PRESSURE (HYSTERESIS ADJ.)

HYSTERESIS
ADJUSTMENT SCREW



ACCEVAL MCE-2 PRACTICAL SETTING VALUES

Automatic drop and lifting pressures of MCE-2 valves have to be adjusted according to specific characteristics of the used suspension.

suspension, or they can use a reduced group of p