

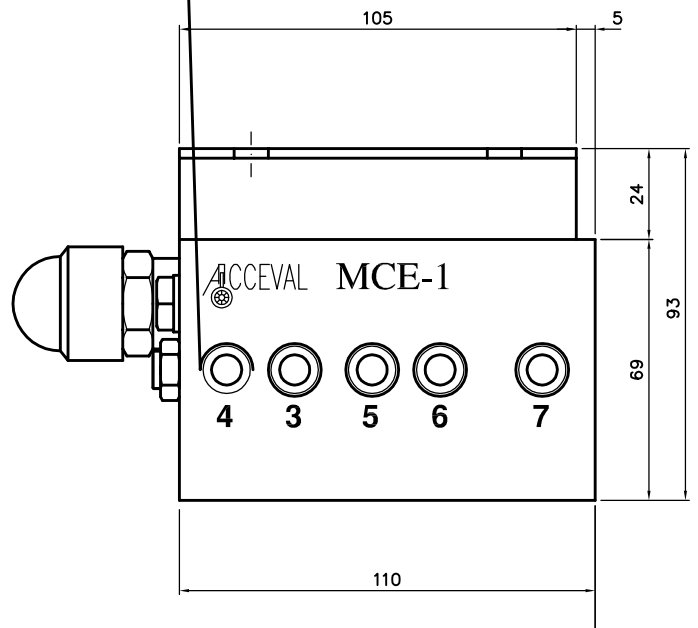
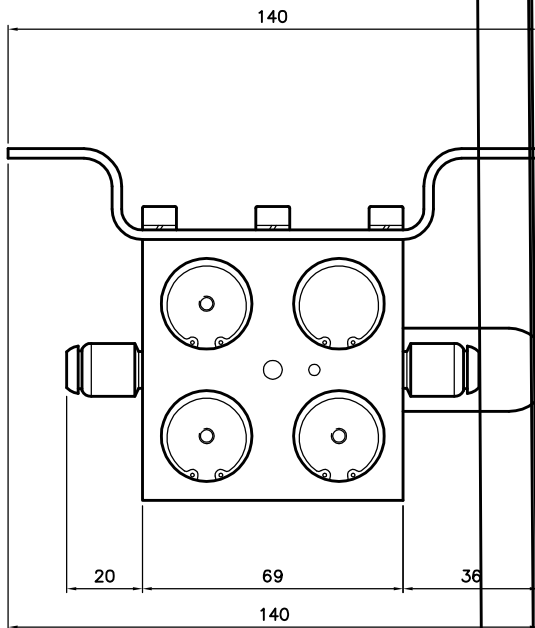
Acceval MCE-1

Lift Axle Control Valve
With Automatic

ACCEVAL MCE-1

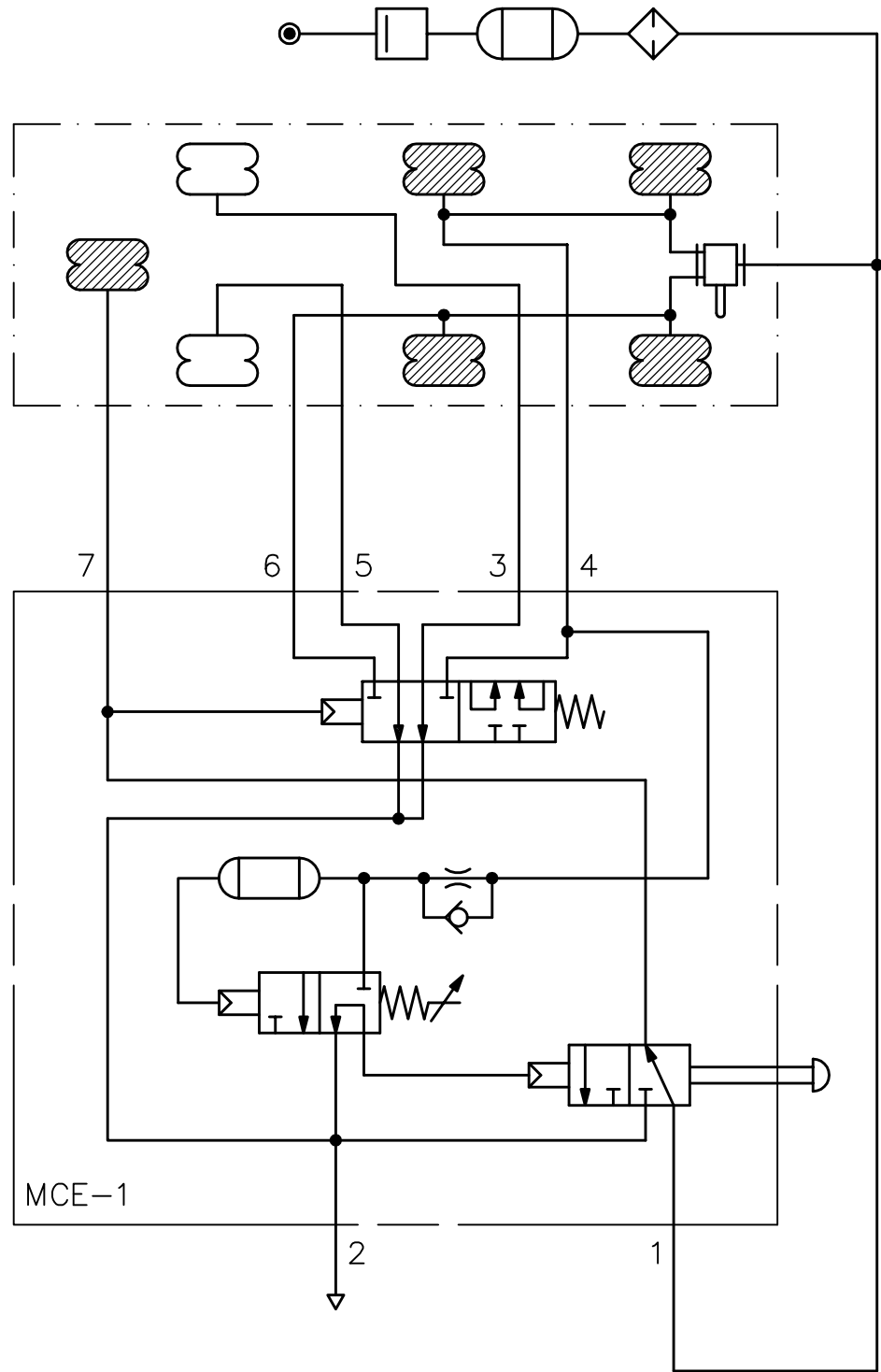
SEMI-AUTOMATIC LIFT AXLE CONTROL VALVE
(Automatic Drop and Manual Lifting)

TÜV
Nr. 390-0582-96 FBK/B



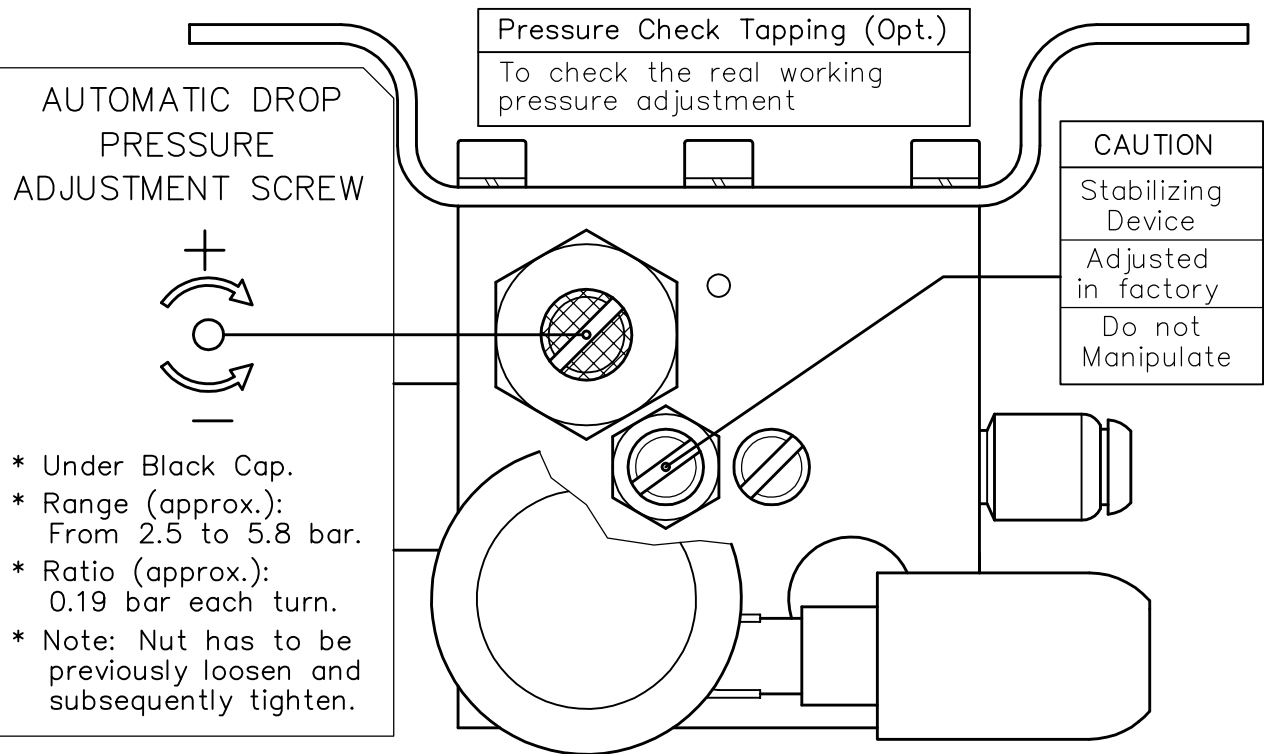
- Steerable elbow fittings for 8 mm tube.
- Pressure check tap

ACCEVAL MCE-1
 PENUMATICAL SCHEME



ACCEVAL MCE-1 ADJUSTMENT SCREWS

AUTOMATIC DROP PRESSURE



ACCEVAL MCE-1 PRACTICAL SETTING VALUES

Automatic drop pressure of MCE-1 valve has to be adjusted according to specific characteristics of the used suspension.

Customers can order MCE-1 valves with the exactly settings, according to load/pressure graph of the used suspension, or they can use a reduced group of practical settings to cover all the different cases, in a functional and safe way (Note: Each case has to be previously calculated and validated).

For MCE-1 valves and vehicles with only one lift axle, we can get it with two different setting values, corresponding to the following two order codes:

A. MCE1-3200

VEHICLE WITH 360 MM SUSPENSION BELLOWS

* Automatic Drop Pressure: 3.2 Bar

B. MCE1-4500

VEHICLE WITH 300 MM SUSPENSION BELLOWS

* Automatic Drop Pressure: 4.5 Bar